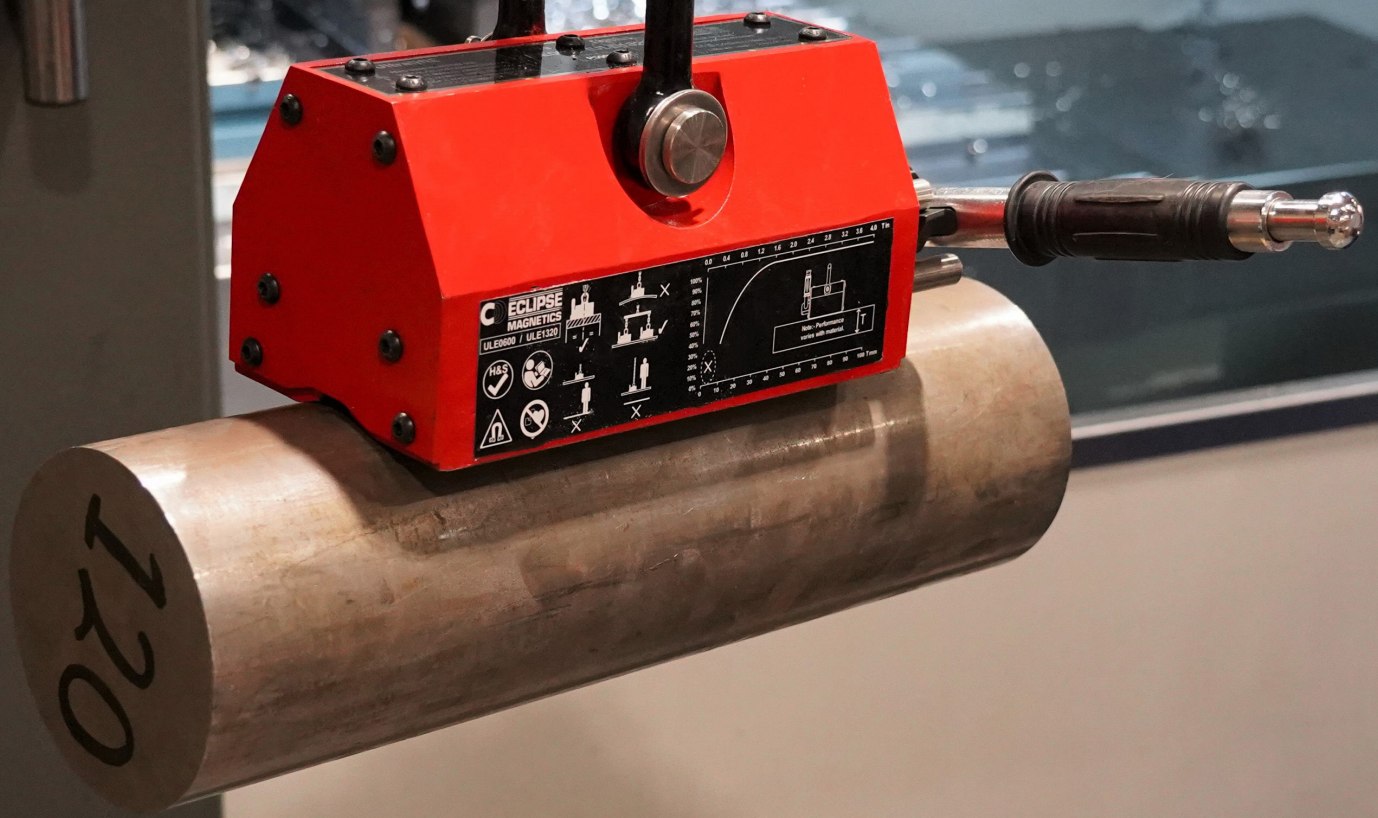
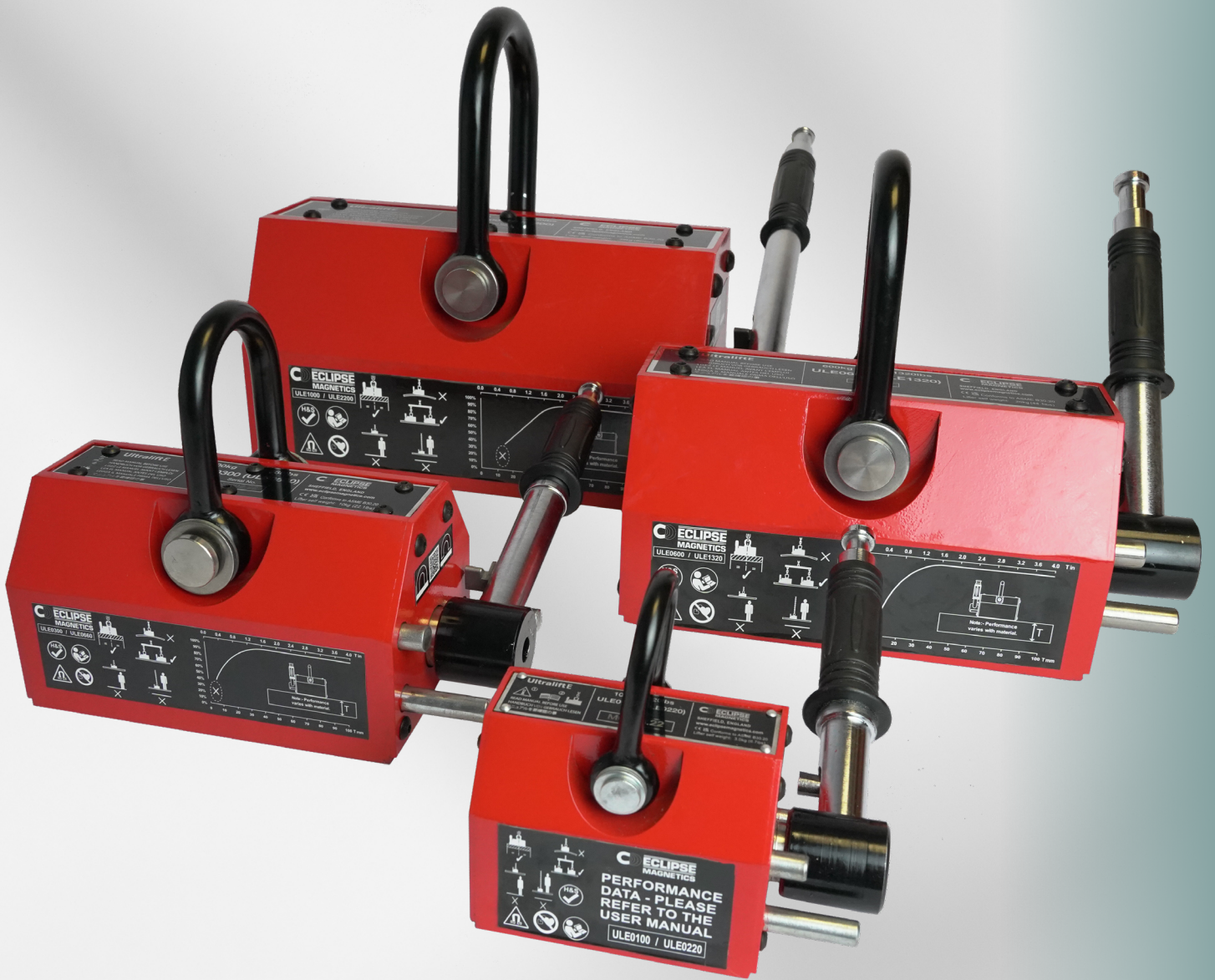


Magnetic Lifters

Product range





Serving leading names in industry:

NSK

Yaskawa

Ford

TATA

JCB

Perkins

Caterpillar

Corus

The Eclipse Magnetics Difference

Group buying power for raw materials.



Standard or made to order products (application specific).



Flexible approach for requirements from one off to multiple quantities.

Large stock holding / warehousing capability.



Scheduling orders for call-off (JIT).



Full in-house manufacturing facilities.

Multiple in-house testing facilities from factory to warehouse.

Bespoke UK centric Technical and Engineering teams.

Experienced staff with in-depth knowledge of material compositions.



Sector-wide application and industry experience.



Process Efficiency Improvements

Ultimate speed & efficiency combined with total safety

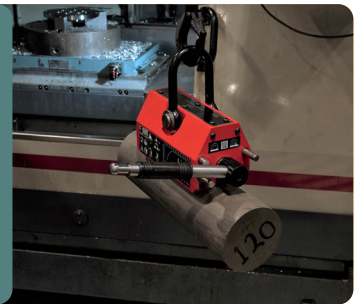
Eclipse Magnetics' lifters are based on fail-safe magnetic technology. Ideally used for precision lifting and moving heavy steel stock. Magnetic lifting technology delivers world class results when handling ferrous loads compared to traditional methods such as slings, chains, hooks and grabs.

Other benefits of Magnetic Lifters include:

Simple, easy use
ready to use in minutes, simple, safe operation



Increased number of lifts per hour
simple on-off operation, engages the load in seconds



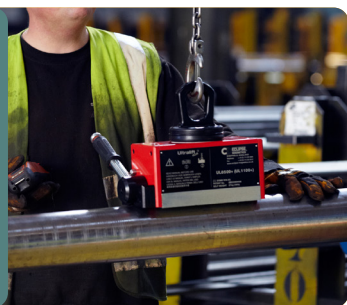
Total safety
incorporates numerous fail-safe mechanisms



Precision lifting
magnetic lifting systems provide a greater lift control



Single person or automated use
complete safety, minimal training, labour efficient



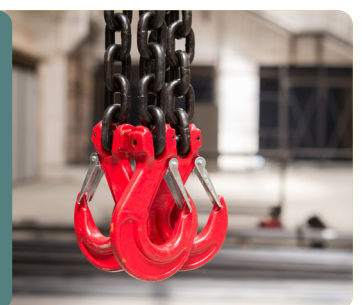
Zero running costs
permanent magnetic technology does not require a sustained power source



Optimise storage space
floor space optimised as access only required to one lifting face



No load damage
protects the product finish, ideal for painted or coated surfaces





Total safety - the safest way to lift ferrous loads

Operation safety is the foremost consideration in the design of all our magnetic lifters.

Permanent magnetic technology with built in fail-safe mechanisms and a 3:1 Working Load Limit (WLL) ensures complete safety for all operations.

All our lifters comply with:

- The Supply of Machinery (Safety) Regulations 2008
- The Electrical Equipment (Safety) Regulations 2016
- The Electromagnetic Compatibility Regulations 2016
- Lifting Equipment Regulations 1998 (LOLER)
- Provision and Use of Work Equipment Regulations 1998 (PUWER)
- ASME BS30.20-2010.

Magnetic Lifter Applications

Optimising process efficiency in diverse applications

Raw Materials



Our lifting and handling systems are widely used for handling raw materials in primary production stages, such as:

- Steel stockholders
- Steel production
- Steel fabrication shops
- Forgings and castings
- Tin products
- Coil handling
- Slab and plate transfer
- Profile picking

Manufacturing

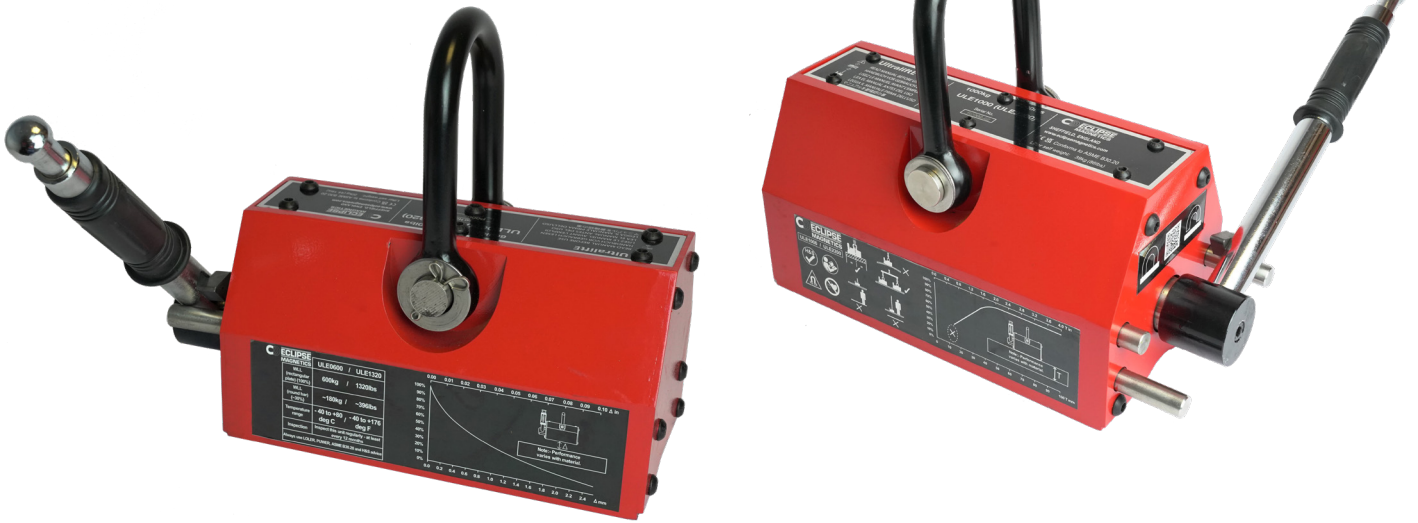


Maximum efficiency combined with total safety are key requirements for demanding manufacturing applications. Our products are widely used in:

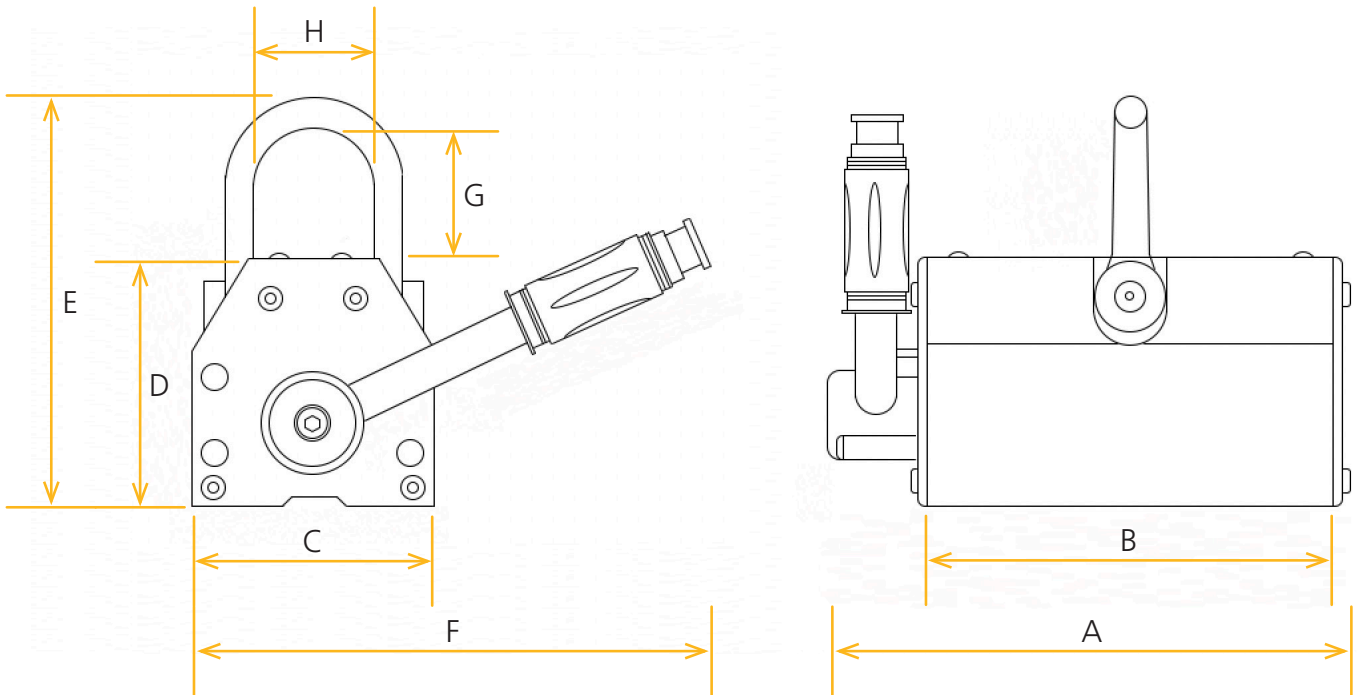
- Yellow goods manufacture
- Feed conveyors
- Digger blades
- Assembly lines
- Machine shops
- Mould making
- Bearing manufacture
- Canned food lines
- Paint cans
- Jar handling systems
- Tin can manufacture
- Turbo manufacture
- Springs
- Brake manufacture
- Engine block manufacture

Ultralift E

Cost-effective choice for high performance lifting



Technical Data



Part Number	Dimensions (mm)								Self Weight kg	Flat Section			Round Section		Units Per Pack
	A	B	C	D	E	F	G	H		WLL*	Thickness Min. mm	Length Max. mm	WLL*	Diameter Max. mm	
ULE0100	131	91	65	75	124	185	45	32	3	100	15	1000	50	80	1
ULE0300	202	157	95	95	169	253	63	46	10	300	20	1500	150	100	1
ULE0600	283	248	120	118	220	280	90	61	23	600	30	2000	300	140	1
ULE1000	350	308	136	140	269	310	110	79	39	1000	40	2500	500	180	1

* Working Load Limit.

** Do not operate at maximum length and maximum diameter on the same item. ALWAYS work within WLL stated.



- Transform your Lifting solutions with our brand new to market, cost-effective Ultralift E Magnetic Lifter
- Guaranteed 3:1 Working Load Limit (WLL) at competitive prices
- Large stock holding/warehousing capability for fast delivery
- Bespoke UK centric Technical and Engineering teams for product support and servicing requirements



Ultralift Plus

Our Premier range of magnetic lifters for ultimate lifting performance

- The premier manually switchable magnetic lifter
- Provides fast and efficient lifting
- A range of built in safety features
- Guaranteed 3:1 Working Load Limit (WLL)

Primary Safety

Lifting Eye – once the lifting eye is under tension with the load a safety mechanism locks the handle ensuring that the raised load cannot be released either deliberately or accidentally.

No Running Costs - No power required.

Secondary Safety

Safety Button - A safety catch locks the handle in the "on" position. This prevents any accidental release of the load once engaged.

Handle - After releasing the safety mechanisms, the magnet can be released easily, by using one hand.

Space Saving - Access only required to the load's top face allowing more efficient use of storage and handling areas.

Primary Safety

Safety Shim – Ultralift Plus is the only lifter to be supplied with a "Safety Shim." This allows pre-testing of the load, irrespective of weight, material type/thickness and surface condition.



Ultralift PLUS

ECLIPSE MAGNETICS
SHEFFIELD, ENGLAND
Telephone: ++44 (0) 114 225 0600
Fax: ++44 (0) 114 225 0610
www.eclipsemagnetics.com

UL0125+ (UL0275+)

CE (ASME B30.20)
PATENT No. GB23399456.
SELF WEIGHT 4.25kg (9.4lb)

READ MANUAL BEFORE USE
HANDBUCH VOR GEBRAUCH LESEN
LISEZ LE MANUEL AVANT L'EMPLOI
LEA EL MANUAL ANTES DEL USO
LEGGI IL MANUALE PRIMA DELL'USO
使用前請仔細閱讀使用手冊

SAFETY SHIM

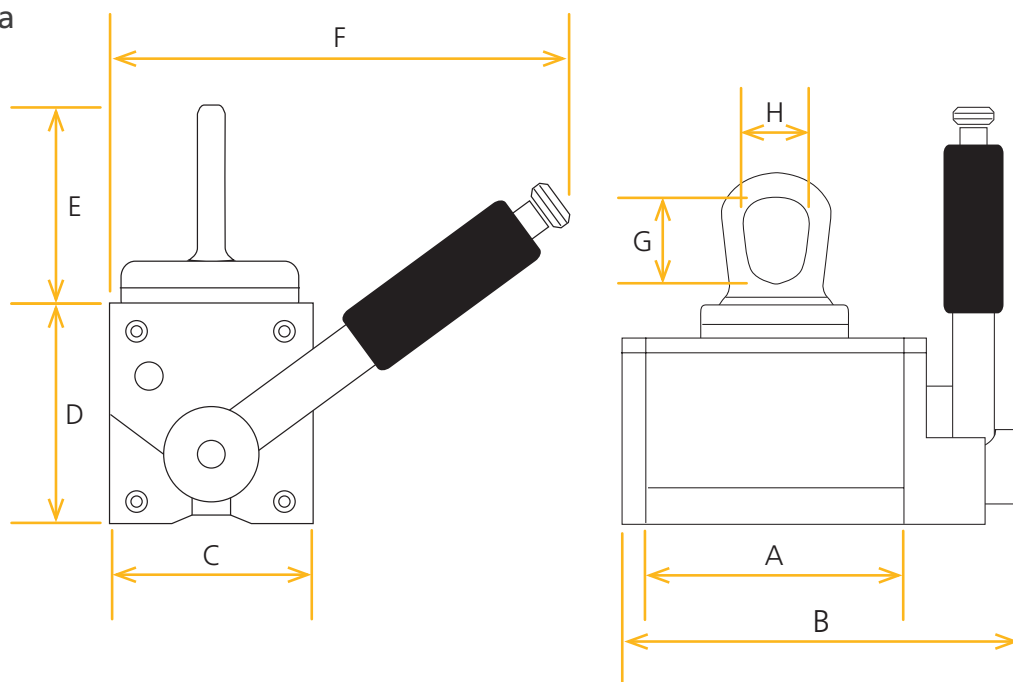
USE WITH 125kg/275lbs

PLUS MAGNETIC LIFTER

SEE USER'S MANUAL FOR DETAILS



Technical Data



Product	Self Weight kg	Flat Section			Round Section			Dimensions mm							
		WLL * kg	Thickness Min. mm	Length Max. mm	WLL kg	Diameter Max. mm	Length** Max mm	A	B	C	D	E	F	G	H
UL0125+	4	125	20	1500	50	200	1500	101	155	69	74	64	152	34	27
UL0250+	11	250	25	1500	100	300	1500	155	214	92	96	96	218	51	40
UL0500+	27	500	30	2000	200	400	2000	224	300	122	128	124	266	63	49
UL1000+	63	1000	45	3000	400	450	3000	260	359	176	174	140	382	71	55

* Working Load Limit

** Do not operate at maximum length and maximum diameter on the same item. ALWAYS work within WLL stated.

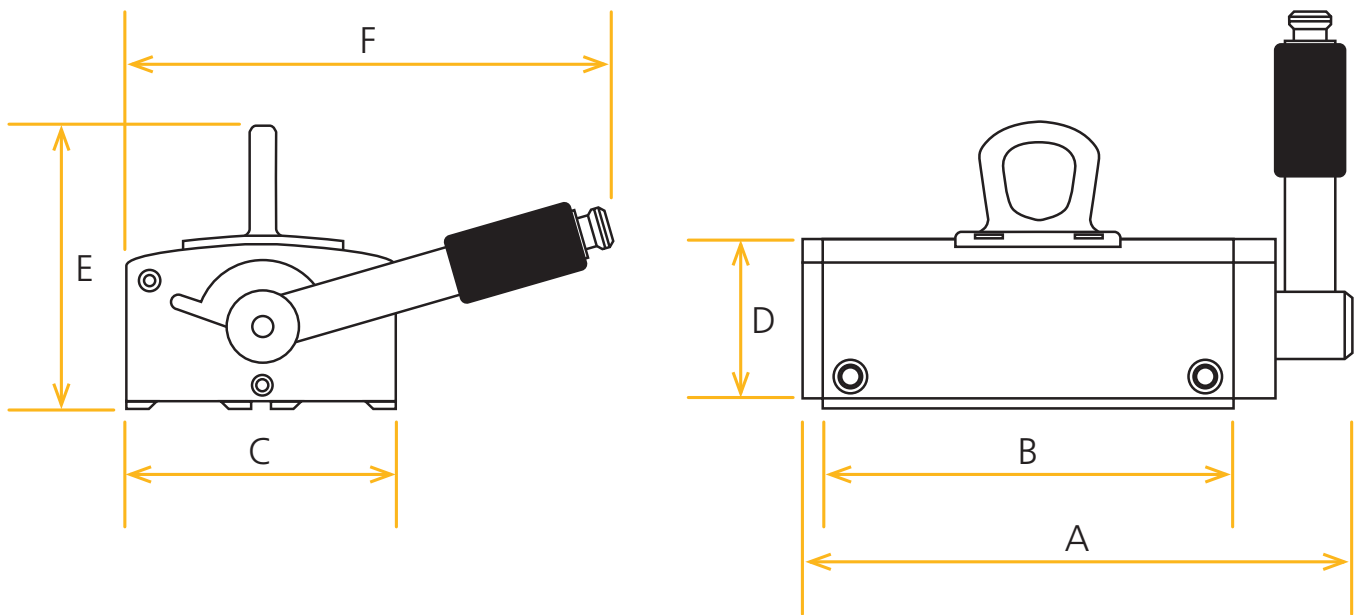
Ultralift TP

The choice for safe lifting of Thin Plate and sheet materials



- Permanent magnetic lifter for the safe lifting of thin plate and sheet pressings
- Guaranteed lifting of single plates
- Simple, quick operation

Technical Data



Product	Self Weight kg	Material Thickness								Dimensions mm					
		5mm		6mm		8mm		10mm		A	B	C	D	E	F
		WLL*	Length Max.	WLL*	Length Max.	WLL*	Length Max.	WLL*	Length Max.						
TP150	8	75	1500	100	1500	150	1500	200	1500	202	150	101	74	126	181
TP300	15	150	2000	200	2000	300	2000	400	2000	352	300	101	74	126	181

* Working Load Limit.

** Do not operate at maximum length and maximum diameter on the same item. ALWAYS work within WLL stated.

Inspection, Servicing, Maintenance & Certification



Inspection

All Magnetic Lifters should be periodically checked to ensure they are in good working order and to ensure the equipment always complies with PUWER & LOLER regulations, ASME B30.20 and local H&S advice.

Should the data plates become detached or damaged please contact your supplier immediately for replacement plates as they provide key information on the product detail such as WLL (Working Load Limit) / SWL (Safe Working Load).

Eclipse Magnetics' ServiceCare & Maintenance

We believe servicing costs should be affordable for your Magnetic Lifter, which is why we offer ServiceCare, an easy way to ensure your Magnetic Lifter is in full working order and has all the correct certifications. There are two different options:

1. On-site visit by an Eclipse Magnetics' fully trained Engineer.
2. At an Eclipse Magnetics' Service Centre (Includes Annual Lifter Test option) and repairs.

All Magnetic Lifters should be ideally serviced every 6 months by a trained professional. The chart below shows our recommended servicing and maintenance schedule which must include an Annual Lifter Test.

Operation	Frequency			
	Daily	Weekly	Monthly	Annually
Inspect pole feet for damage				
Inspect lifting eye for damage and security				
Safety mechanism operation (if applicable)				
Inspect data plates for damage				
Proof test WLL / SWL				



The magnetic performance of each lifter must be checked annually. The Annual Lifter Test that Eclipse Magnetics provides includes the following:

- Visual Inspection
- Estimated & Actual kgs Pull Force Test (WLL / SWL proof test check)
- Appraisal of Installations & Applications
- Issue of Test Certification (where applicable)
- Submittal of a full report including any recommendations

With our ServiceCare packages, you can be rest assured that your Magnetic Lifter is in full working order and have the correct certifications to comply with all required regulations.



WLL
(rectangular
plate) (100%)
100kg / 220lbs

WLL
(round bar)
(30%)
~30kg / ~66lbs

Temperature
range
-40 to
+80
deg C
-40 to
+176
deg F

Read the manual before use
Inspect this unit regularly -
at least every 12 months
Always use LOLER, PUWER,
ASME B30.20 and H&S advice

ECLIPSE
MAGNETICS

**PERFORMANCE
DATA - PLEASE
REFER TO THE
USER MANUAL**

ULE0100 / ULE0220

M0002.22
ULE0100 / ULE0220
100kg / 220lbs
ULTRA-MAGNETICS

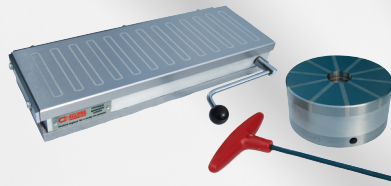
Our Other Magnetic Technology Products

In addition to our magnetic lifters range, Eclipse Magnetics manufacture a wide range of high performance magnetic products for diverse applications.

Sub-Micron Magnetic Filtration for Industrial Fluids



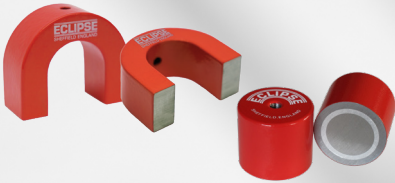
Workholding Systems



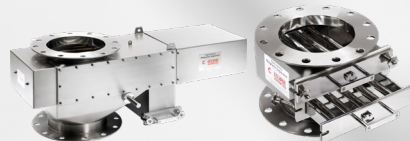
Magnetic Workshop Aids



Magnetic Materials & Assemblies



Foreign Body Removal & Separation Systems



Heating System Filters



Eclipse Magnetics Worldwide

Europe
Atlas Way
Sheffield
S4 7QQ
England

T +44 (0)114 225 0600
F +44 (0)114 225 0610
sales@eclipsemagnetics.com

Americas
442 Millen Road, Unit 9,
Stoney Creek
Ontario, L8E 6H2,
Canada

T +1 905-664-5585
F +1 905-664-7090
sales@eclipsetoolsinc.com

China
No. 168 Chengjian Road
Minhang District
Shanghai
PR China

T +86 21 6434 8600 *150
F +86 21 6434 6488
szhou@eclipsemagnetics.com

